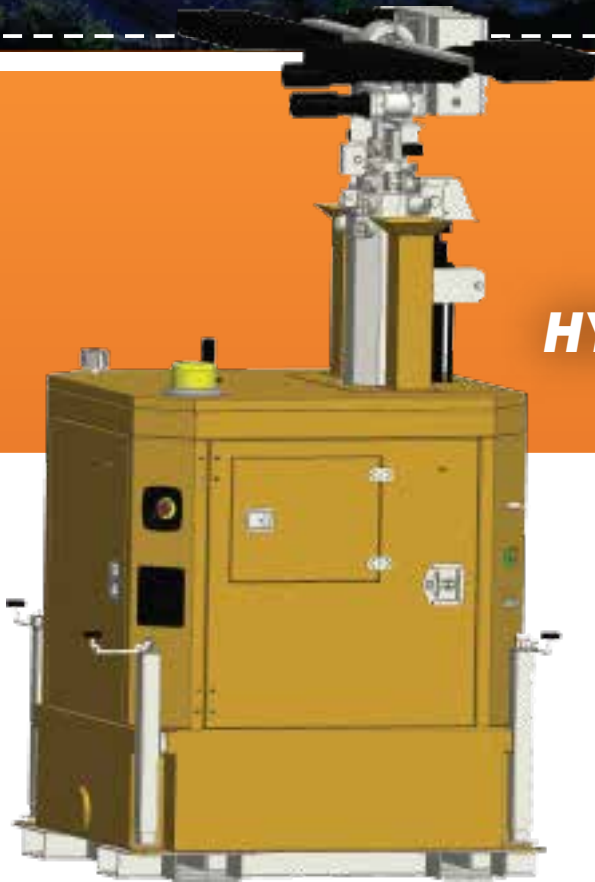




**PITMASTER**  
**GENERATORS**



# HB4

## HYDRAULIC LED LIGHTING TOWER

*Pit Master Lighting Towers can save 16 to 20 metric tonnes of CO2 emissions per tower per year.*



**THINK GREEN**



**Phone (07) 4842 9800**

DISCOVER OUR FULL RANGE OF GENERATORS AT

**[WWW.PITMASTER.COM.AU](http://WWW.PITMASTER.COM.AU)**

# HB4

## HYDRAULIC LED LIGHTING TOWER

Powered by Kubota Engine with reliable power output, high illumination and a compact design. Pit Master lighting towers are fitted with forklift pockets and lift points for transportation and are suitable for all weather conditions. Suited for use in Mining, Construction, Events and Military

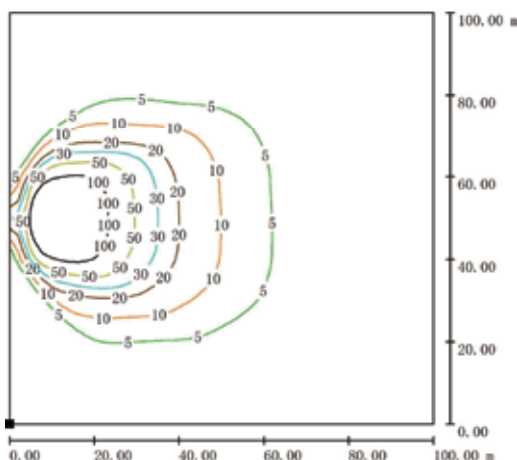
## SPECIFICATIONS

### GENERAL FEATURES

Rated Output	5 KW
Mast Height	9.2 Metres
LED Light	4*300W
Lumens	180,000
Operation	Hydraulic
Fuel Tank Capacity	140L

### LAMP TECHNICAL DATA

Light	4*300W
Lighting Area	3065 m <sup>2</sup> arces @5lx
Total Acreage	100x100m
Luminosity	14 lx@10000 m <sup>2</sup> average in the whole area



### PERFORMANCE DATA

Model	HB4
Rated Voltage	DC48V
Rated Power	5KW
Min. Working Temperature	-10 C
Max. Working Temperature	50 C
Sound Pressure Level (dBA/7m)	55dBA
Fuel Tank Capacity	140L
Running Time	200h

### ENGINE

Model	Kubota Z482
Speed	3000 rpm
Rated Net Output (PRP)	8.2 KW
Cylinder Bore and Stroke	67x68mm
Number of Cylinders	2

### ALTERNATOR

Model	Meccalte PM5G
Rated Output (KW)	5.0
Protection	IP23
Insulation Class	H

### CONTROLLER

Brand	HarbinGer ALC708
-------	------------------

### MAST

Type	Hydraulic
Rotation (Electric)	180
Tilt (Electric)	180
Max Height	9.2m
Wind Proof	80km/h

### LIGHTS

Lamps	LED
Wattage	4x300W
Total Lumens	180,000

### MINIMUM DIMENSIONS

Height	2450 mm
Length	1250 mm
Width	1150 mm

### MAXIMUM DIMENSIONS

Height	9200 mm
Length	2600 mm
Width	2500 mm

Weight 880kg

